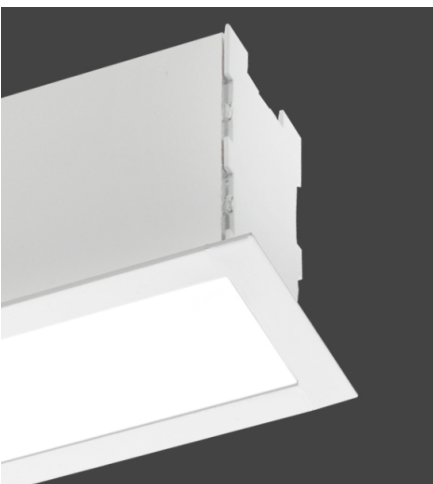


Recessed Linear luminary SLIM for LED

Acrylic diffuser with high performance.



DESCRIPTION

Decorative recessed slim luminaire with 40 mm width, with the driver fit inside, adaptable to all the ceiling systems. Perfect for different applications. It is ideal to light continuous lines, without interruption of the light.

DETAILS

- Body manufactured in extruded aluminium with high quality.
- Versatile luminaire, allows its installation as individual luminaire, solution for continuous line, corners, etc
- Useful life over than 50.000h.
- CRI>80.
- Available in different colour temperatures.
- High lighting efficiency.
- Opal or microprismatic diffuser UGR<19.

CELUX COMMITMENT

Luminaria made in Spain by us.
5 years guarantee.



FINISHES



RAL9003 (Textured white)



RAL9006 (Textured grey)



RAL9005 (Black)

*For other finishes, ask for availability.

OPTICAL COMPONENTS

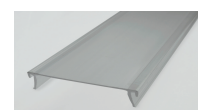
Plastic diffusers with high performance for the maximum efficiency of the LED.



Opal LED. 80% transmission of the light, LED points are not visible.



Microprism:UGR<19, new certified plastic and with quality.



ACCESSORIES



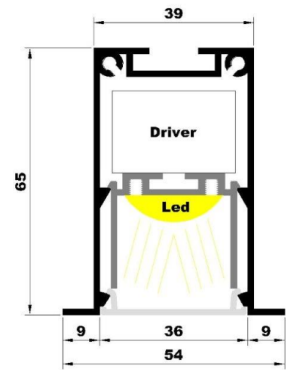
Joining pieces



Fixing piece



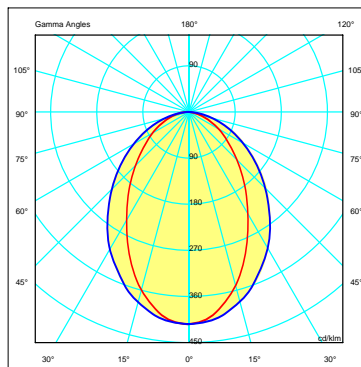
End cap



Inside heatsink profile to fix the strip and the driver in only one piece.

POLAR DIAGRAM

Ask for curves, LDT formats and photometric informs to comercial@celuxiluminacion.es



PF1(0-C 31W, size of sample 1410 mm.



OPTIONS

- Special connections or WIELAND type.
- Adjustment system of lighting intensity.
- Systems to change the colour temperature.
- Special shapes, or continuous lines.
- Lighting configuration adapted to the customer.

APPLICATIONS

- Showrooms  Meeting rooms  Offices  Shops  Home 

RECOMMENDED LIGHTING CONFIGURATIONS

Code	Reference	lm	Colour T°W	mm		
40402140XKC1	PF140-EMP-C1	1730 - 1810	3000-4000	11,8	570	570x43 1.4
40402140XKC3	PF140-EMP-C3	3460 - 3620	3000-4000	23,6	1130	1130x43 2.4
40402140XKC4	PF140-EMP-C4	4330 - 4530	3000-4000	29,5	1410	1410x43 2.9
40402140XKC5	PF140-EMP-C5	5190 - 5430	3000-4000	35,4	1690	1690x43 3.2

*Replace X by the colour of the profile(W=White, G=Grey, B=Black)

*Replace K by the colour temperature (3=3000, 4=4000)

Data based on Tridonic plaques.

