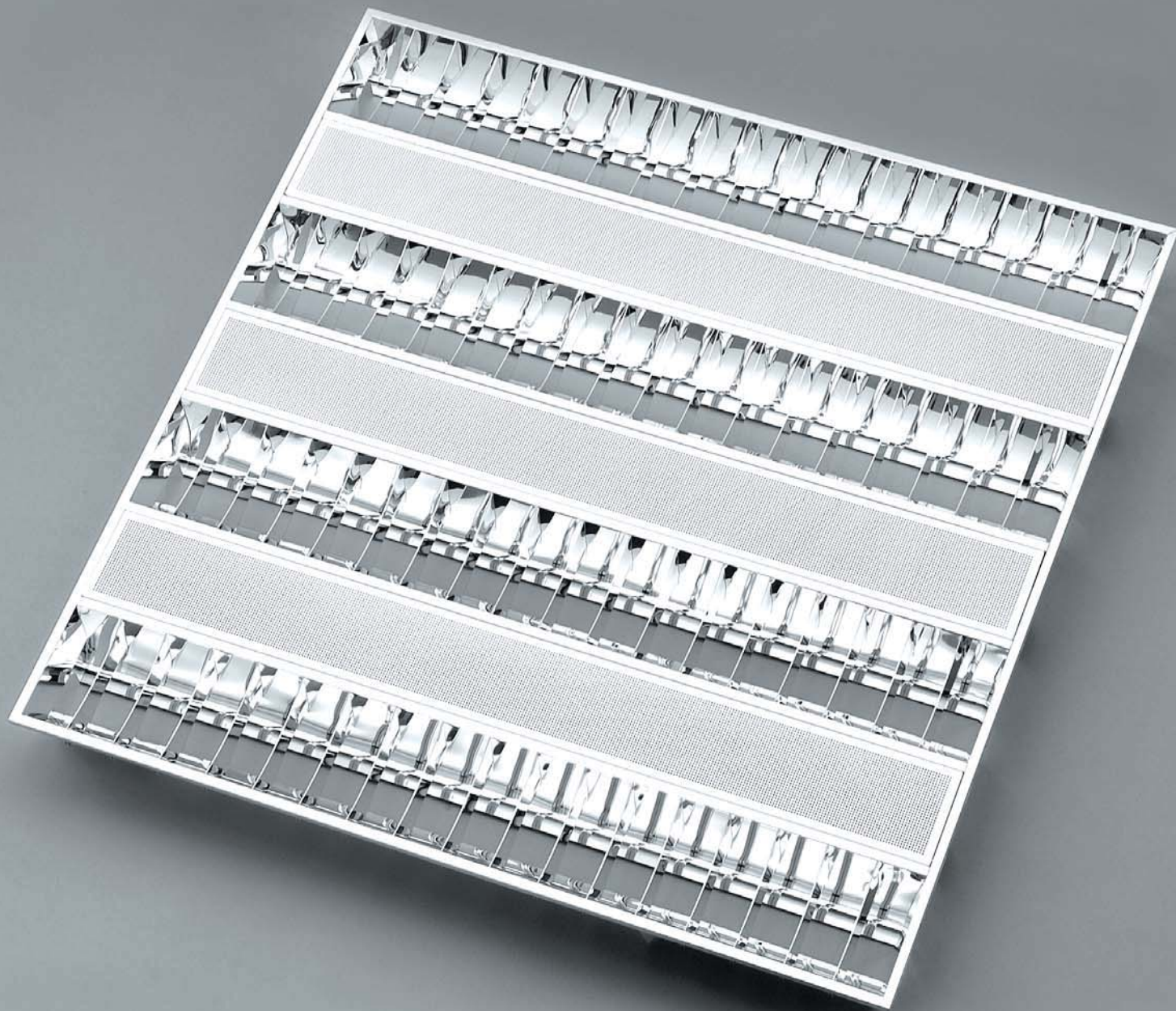


# DFI 20



# DFI20

Difusor parabólico de lamas tridimensionales para para tiras de LED, de altura reducida, elevadas prestaciones lumínicas y gran belleza decorativa.

*Parabolic louver with three-dimensional crossblades for LED strips, reduced height, high-performance lighting and of great decorative appeal.*

Nº DE LÁMPARAS / WATIOS	DIMENSIONES		
NO. OF LAMPS / WATT	DIMENSIONS		

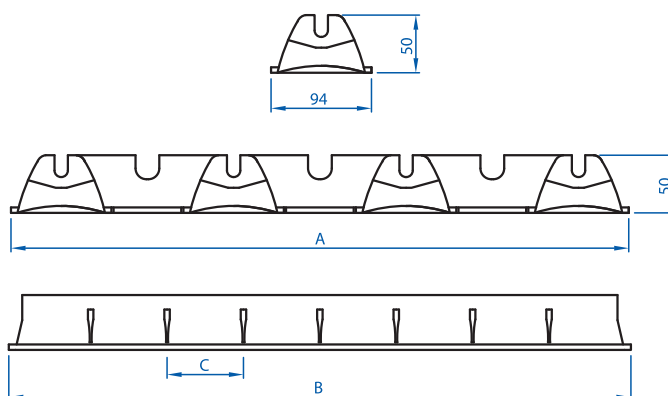
	A	B	C
1X14/24	94	570	31
1X21/39	94	870	31
1X28/54	94	1170	30,5
1X35/49/80	94	1470	31
2X14/24	270	570	31
2X21/39	270	870	31
2X28/54	270	1170	30,5
2X35/49/80	270	1470	31
3X14/24	570	570	31
3X21/39	570	870	31
3X28/54	570	1170	30,5
4X14/24	570	570	31
4X21/39	570	870	31
4X28/54	570	1170	30,5

## REFERENCIAS MATERIALES DIFUSORES

1	Aluminio Brillo Especular
2	Aluminio Brillo Anodizado 99,85
3	Aluminio Brillo Anodizado 99,90*
4	Aluminio Brillo Anodizado MIRO-4*
6	Aluminio Mate Anodizado MIRO-6*
8	Aluminio Mate Anodizado 99,90
9	Aluminio Prelacado Blanco

## LOUVERS MATERIALS REFERENCES

1	Polished Aluminium
2	High Gloss Anodised Aluminium 99,85
3	High Gloss Anodised Aluminium 99,90*
4	High Gloss PVD Coated MIRO-4*
6	Matt PVD Coated MIRO-6*
8	Matt Anodised Aluminium 99,90
9	White Lacqued Aluminium



La cota C es variable a petición del cliente. La que figura en el cuadro técnico es orientativa.  
Para cualquier otra medida, consultar.  
Measurement C is variable at the request of the client. What is shown in the technical chart is illustrative.  
For any other measurement, please consult us.

## REFERENCIAS MATERIALES BANDEJAS

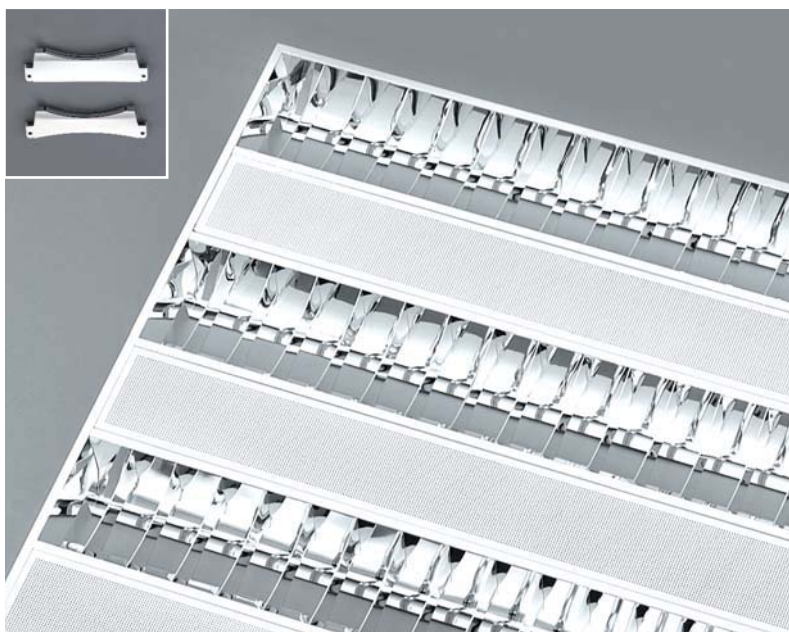
1	Aluminio Brillo
8	Aluminio Mate
9	Aluminio Prelacado blanco
S	Hierro Prelacado Microperforado

\*Aluminio libre de iridiscaciones.  
Para cualquier otro material anodizado, consultar.

## SHEETS MATERIALS REFERENCES

1	Polished Aluminium
8	Matt Aluminium
9	White Lacqued Aluminium
S	Microperforated White Lacqued Iron

\*Anti-iridescent aluminium.  
For any other anodised material, please consult us.



Fotometría disponible.  
Photometry available.

