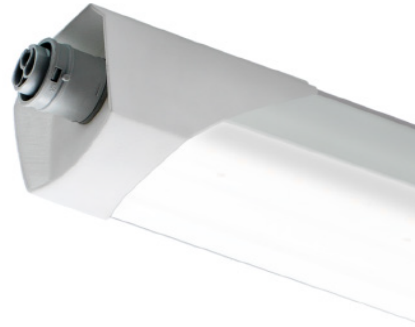


# 50523EST150

WATERPROOF LUMINAIRES IP66



New series of high energy efficiency LED waterproof luminaires with greater impact resistance manufactured in Spain. Suitable for installation in places where protection against water, moisture and dust is needed. The plug & play concept allows a tool-free installation, fast and easy



## EFFECTIVE LIGHTING INFORMATION

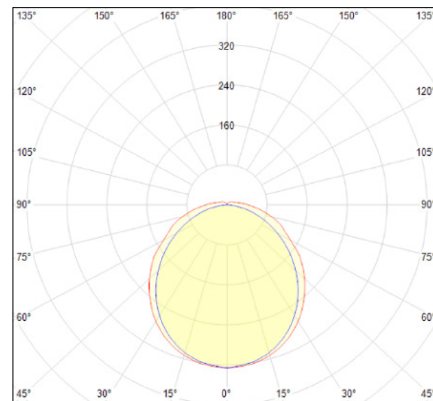
LM/W	110lm/w
Consumption	53W
Colour temperature	6500K

## FEATURES

	Recessed
	5 years guarantee
	Water tightness
	Mechanical resistor
	1,69Kg

## ELECTRICAL INFORMATION

	230V/50Hz
	On/Off Power Supply
	Class I



## MEASUREMENTS

